



# City of Chicago



O2017-3811

Office of the City Clerk

## Document Tracking Sheet

<b>Meeting Date:</b>	5/24/2017
<b>Sponsor(s):</b>	Valencia (Clerk)
<b>Type:</b>	Ordinance
<b>Title:</b>	Correction of City Council Journal of Proceedings of January 25, 2017
<b>Committee(s) Assignment:</b>	Committee on Committees, Rules and Ethics

CHICAGO, May 4, 2017.

*Be It Ordained by the City Council of the City of Chicago:*

SECTION 1. That the ordinance (O2016-8634) reclassifying the area shown on Map Number 5-I passed by the City Council of the City of Chicago on January 25, 2017 and printed on page 42166 is hereby corrected by inserting immediately after Section 2 the following language:

"[Site Plan; Basement, First and Second Floor Plans; Third Floor and Roof Plans; and North, South, East and West Building Elevations attached to this ordinance printed following the Type 1 Narrative Rezoning Analysis.]

Type 1 Narrative Rezoning Analysis attached to this ordinance reads as follows:

*Project Narrative.*

*Type 1 Zoning Amendment For 1905 N. Albany Ave.*

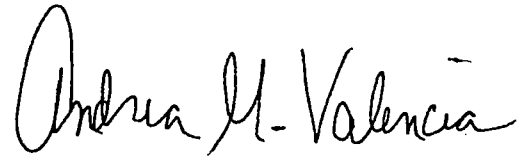
Proposed Zoning Change: RT4 Residential Two-Flat, Townhouse and Multi-Unit District

The applicant is requesting a zoning amendment from an RS3 Residential Single-Unit (Detached House) District to an RT4 Residential Two-Flat, Townhouse and Multi-Unit District to allow for a proposed three-story, three residential dwelling unit building with three parking spaces.

Lot Area:	3,125 square feet
Parking:	3 spaces
Front Setback:	4.70 feet
Rear Yard:	50 feet
North Side Setback:	3 feet
South Side Setback:	3 feet

FAR: 1.2  
Building Square Footage: 3,747.75 square feet  
Building Height: 36 feet"

SECTION 2. This ordinance shall take effect after its passage.

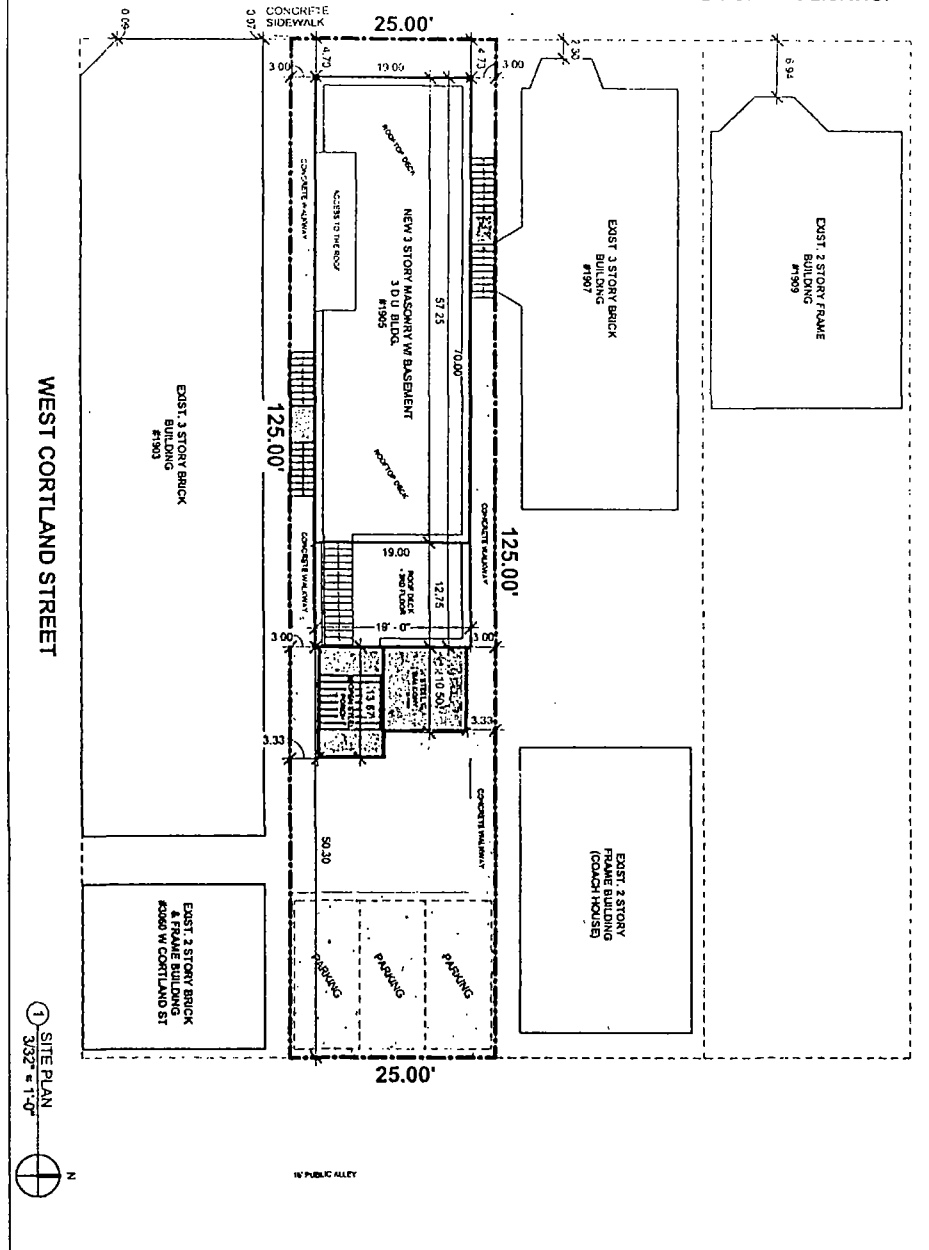
A handwritten signature in black ink that reads "Andrea M. Valencia". The signature is written in a cursive style with a large initial 'A'.

---

ANDREA M. VALENCIA,  
*City Clerk.*

NORTH ALBANY AVENUE

FINAL FOR PUBLICATION



WEST CORTLAND STREET

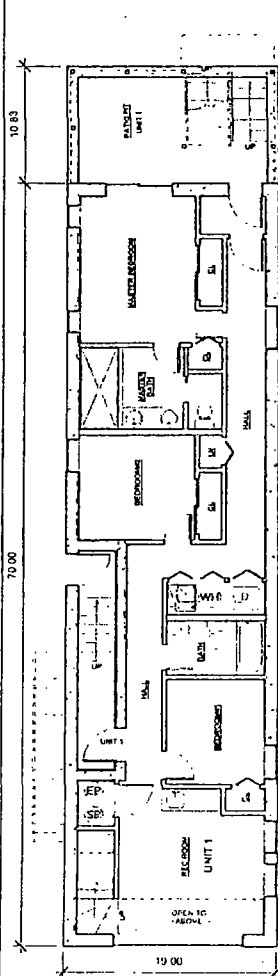
1 SITE PLAN  
 3/32" = 1'-0"  
 N

1905 NORTH ALBANY AVE

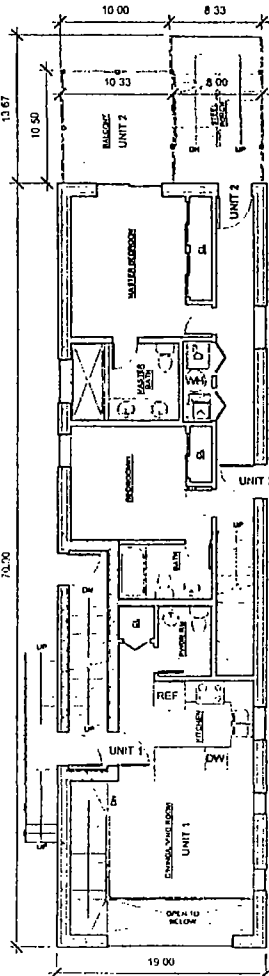
# 1905 NORTH ALBANY AVE



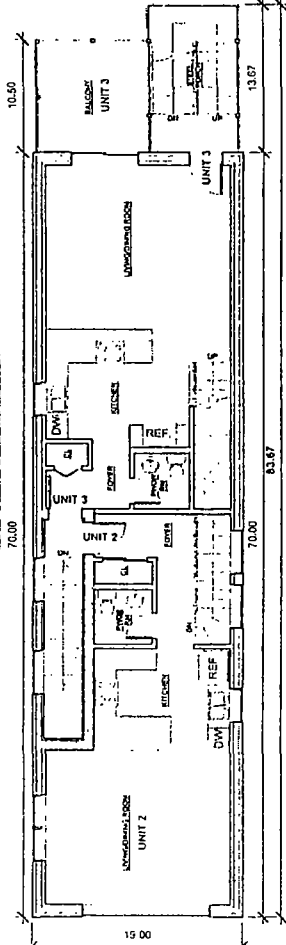
**BASEMENT PLAN**  
SCALE: 1/8" = 1'-0"



**1ST FLOOR PLAN**  
SCALE: 1/8" = 1'-0"



**2ND FLOOR PLAN**  
SCALE: 1/8" = 1'-0"

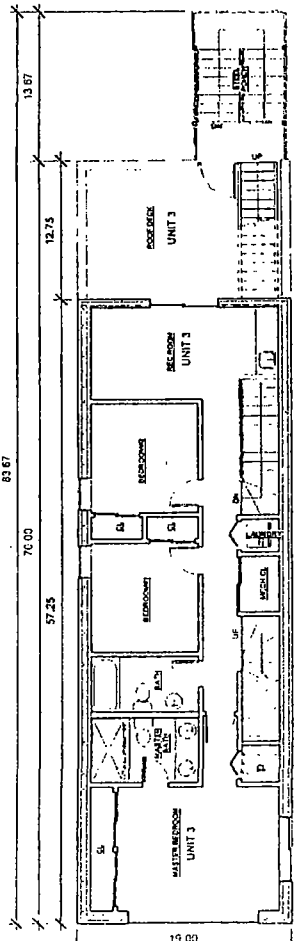


FINAL FOR PUBLICATION

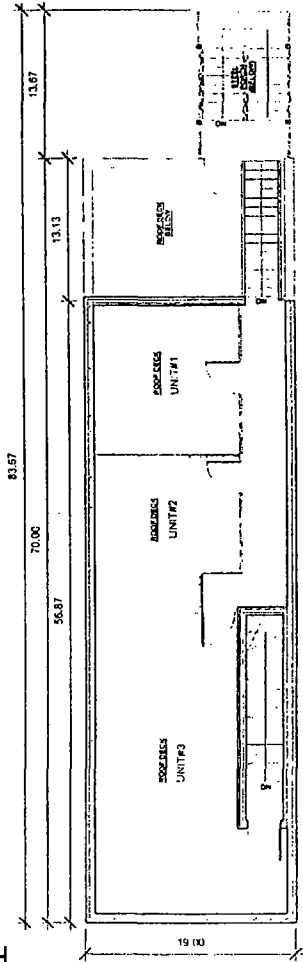
# 1905 NORTH ALBANY AVE



**3RD FLOOR PLAN**  
SCALE 1/8" = 1'-0"



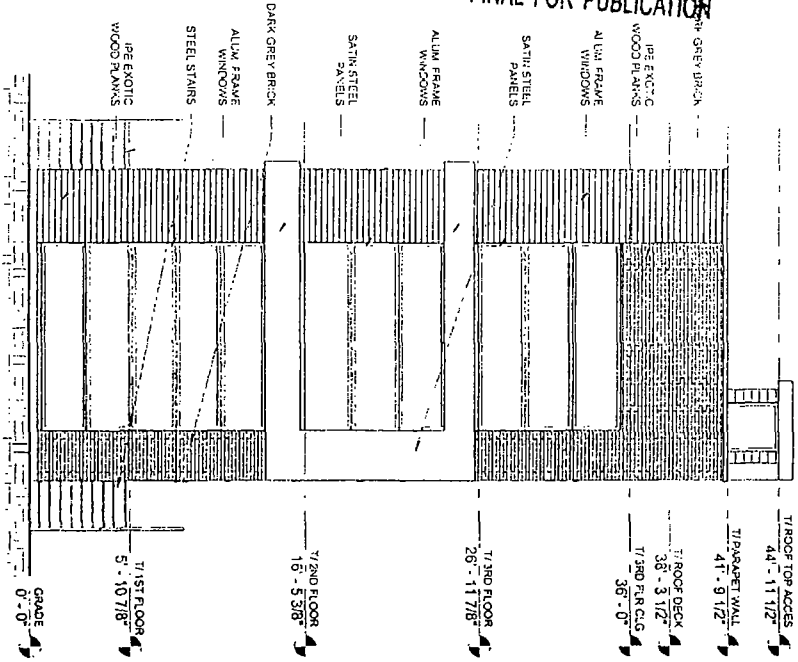
**ROOF PLAN**  
SCALE 1/8" = 1'-0"



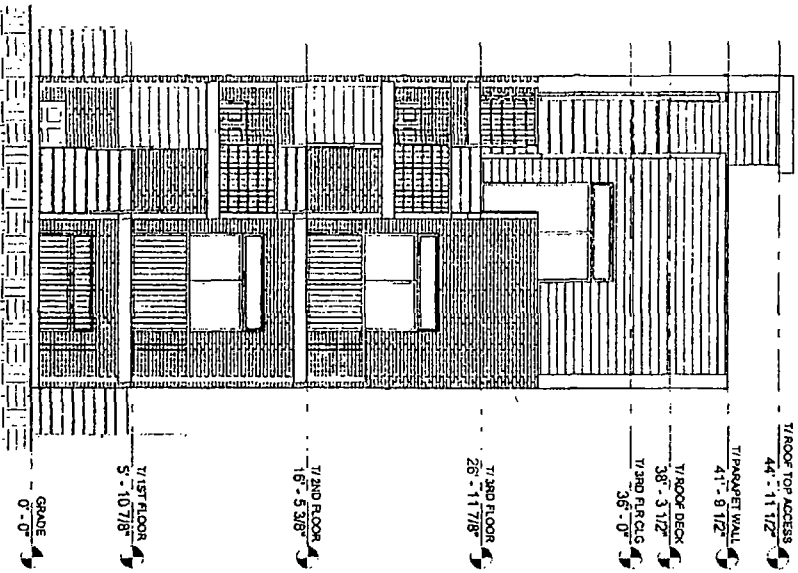
FINAL FOR PUBLICATION

FINAL FOR PUBLICATION

WEST (FRONT) ELEVATION



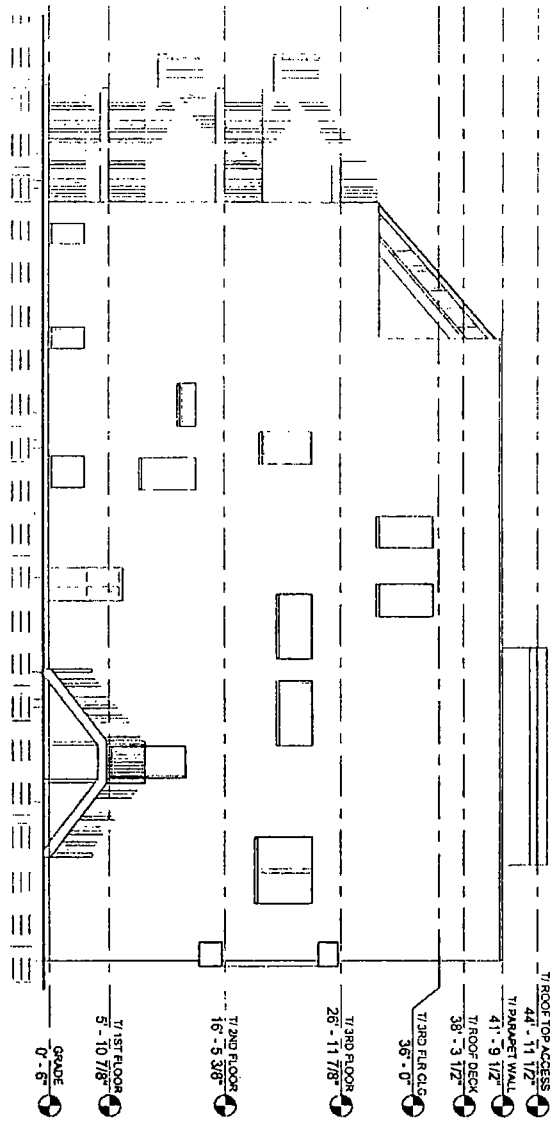
EAST (REAR) ELEVATION



1905 NORTH ALBANY AVE

FINAL FOR PUBLICATION

NORTH (LEFT SIDE) ELEVATION

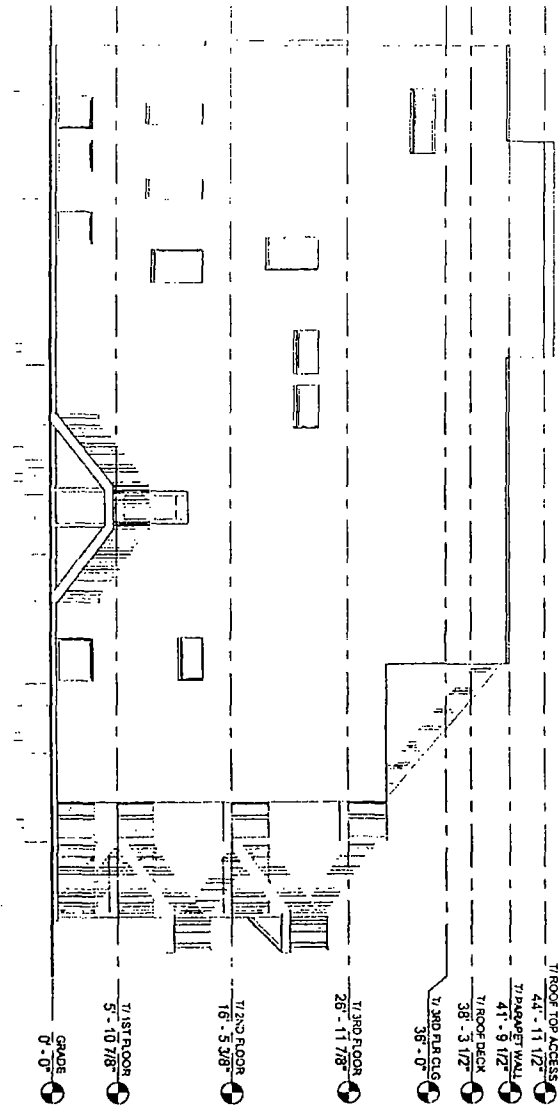


1905 NORTH ALBANY AVE



FINAL FOR PUBLICATION

SOUTH (RIGHT SIDE) ELEVATION



1905 NORTH ALBANY AVE