



Office of the Chicago City  
Clerk



O2012-3109

Office of the City Clerk

City Council Document Tracking Sheet

<b>Meeting Date:</b>	4/24/2012
<b>Sponsor(s):</b>	Mendoza, Susana A. (Clerk)
<b>Type:</b>	Ordinance
<b>Title:</b>	Correction of City Council Journal of Proceedings of March 14, 2012
<b>Committee(s) Assignment:</b>	Committee on Committees, Rules and Ethics

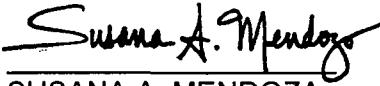
April 23, 2012.

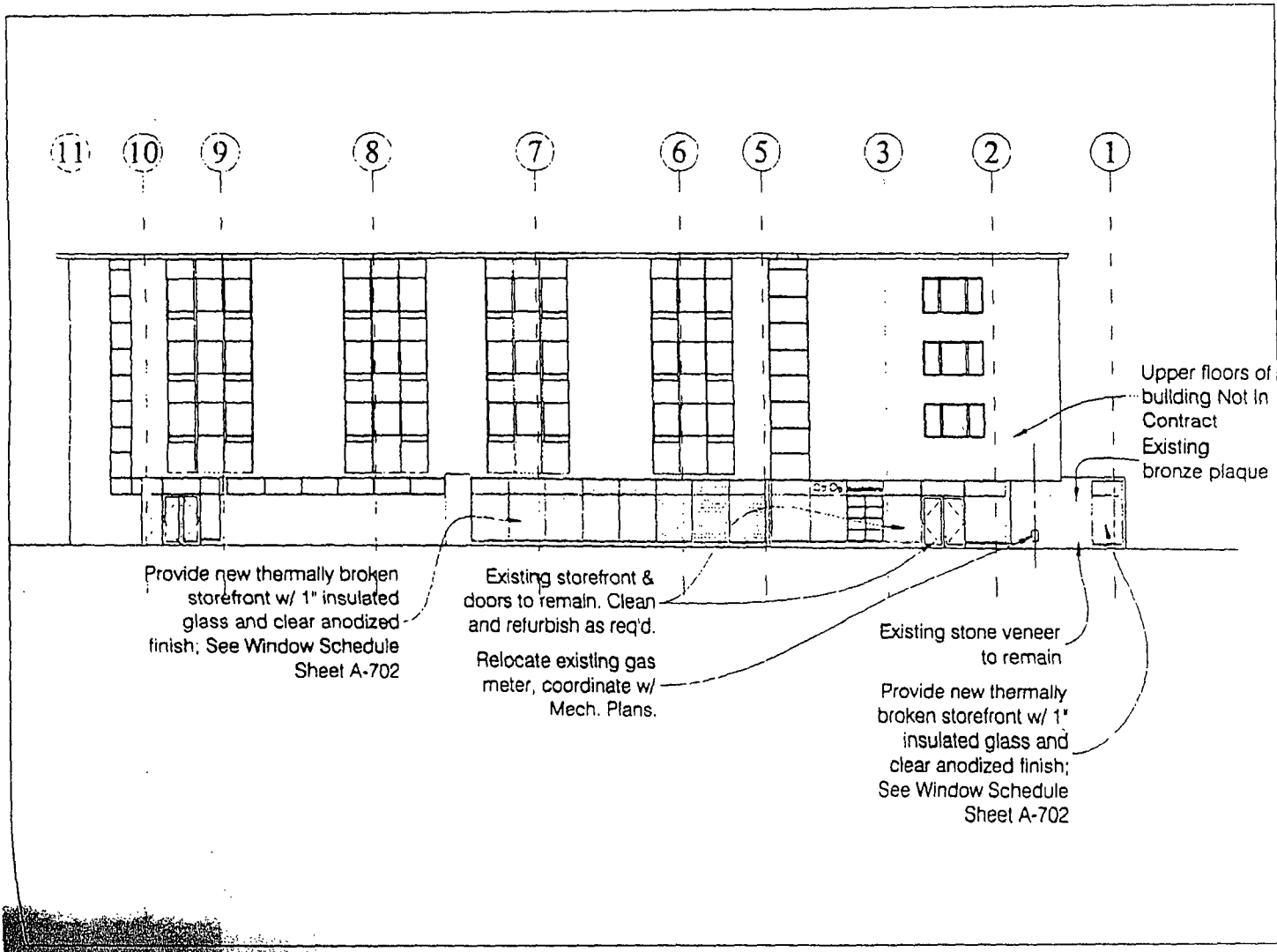
*Be It Ordained by the City Council of the City of Chicago:*

SECTION 1. The ordinance (SO2011-8892) passed by the City Council of the City of Chicago on March 14, 2012 and printed on pages 23224 through 23237 of the *Journal of the Proceedings of the City Council of the City of Chicago* is hereby corrected by deleting the drawing on page 23237 and inserting in lieu thereof the drawing attached hereto as Attachment 1.

SECTION 2. The ordinance (O2012-598) passed by the City Council on March 14, 2012 and printed on pages 23243 through 23248 of the *Journal* of such date is hereby corrected by deleting the drawing for Exhibit B entitled "Significant Historical and Architectural Features -- Interior" printed on page 23248 and inserting in lieu thereof the drawing attached hereto as Attachment 2.

SECTION 3. This ordinance shall take effect after its passage.

  
SUSANA A. MENDOZA,  
City Clerk.



Provide new thermally broken storefront w/ 1" insulated glass and clear anodized finish; See Window Schedule Sheet A-702

Existing storefront & doors to remain. Clean and refurbish as req'd.

Relocate existing gas meter, coordinate w/ Mech. Plans.

Existing stone veneer to remain

Provide new thermally broken storefront w/ 1" insulated glass and clear anodized finish; See Window Schedule Sheet A-702

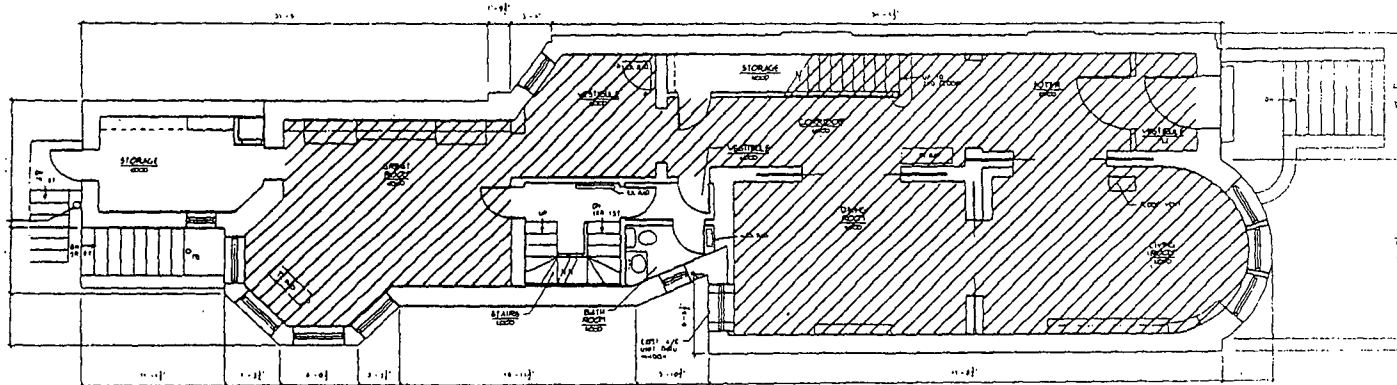
Upper floors of building Not in Contract  
Existing bronze plaque

Elevations.  
(Page 5 of 5)

ATTACHMENT 1.

Harriet F. Rees House  
2110 S. Prairie Ave.

Exhibit B  
Significant Historical and Architectural Features - Interior



FIRST FLOOR PLAN  
SCALE: 1/8" = 1'-0"  
NORTH

 Significant Interior Historical and Architectural Features - First-floor public rooms  
(entrance hall, parlors and dining room)

Significant Historical And Architectural Features -- Interior

Exhibit "B"

ATTACHMENT 2.